

Product Information

Building

EP 1403

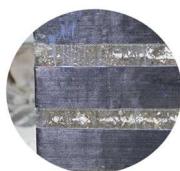
Two-part, thixotropic, thickened epoxy system designed for smoothing and grouting concrete on vertical and horizontal surfaces. Also applicable at low temperatures and in the presence of humidity.

FEATURES

- Low temperature curing
- Curing in the presence of humidity
- Does not drip from vertical surfaces and ceilings
- Waterproof

COMPOSITION

- Part A: epoxy resin EP1403
- Part B: hardener H1403



APPLICATIONS

- Smoothing, restoration, grouting of concrete surfaces.

TYPICAL PROPERTIES

Specifications writers: These values are not intended for use in preparing specifications. Please contact your local sales representative prior to writing specifications on this product.

Properties	Unit	Value
Aspect Part A/Part B	Visual	Paste / Paste
Color Part A/Part B	Visual	White cream / Grey
Density at 23°C Part A/Part B	g/cm ³	1.366 / 1.468
Viscosity at 23°C Part A/Part B	mPa.s	TIXO / TIXO
Mix ratio Part A/Part B	pbw	100 : 42
Mix ratio Part A/Part B	pbv	100 : 40
Gel time (100g at 23°C)	Minutes	60
Onset [DSC]	°C	64
Peak [DSC]	°C	103
Curing at 23°C	hours	18 – 24
Full cure at 23°C	days	5
Hardness	Shore D	80
Flexural modulus	MPa	4100
Flexural strength	MPa	41
Tensile strength	Mpa	30
Elongation at break	%	4,5
Compressive modulus	MPa	1800
Compressive strength	MPa	77
Adhesion on concrete	MPa	3 (cls rupture)
Glass transition (DSC)	°C	71

SETTINGS

Homogenize the components before use. Apply Primer EP1401 and wait approximately 1 hour but no more than 3 hours before proceeding with the application of EP1403.

MIXING

Dose resin and hardener in the indicated ratio and mix until a homogeneous mixture is obtained. Use a low speed impeller to avoid air entrainment.

Warning! Epoxy resins and amines can generate a highly exothermic, uncontrolled reaction, with decomposition above 250°C. Prepare limited quantities of material and proceed with application.

POTLIFE E GELTIME

The Potlife or time of use of the mixture is normally the time required for an increase equal to twice the initial viscosity. Both Pot-life and Gel-time depend on mass and temperature: the greater the mass, the faster the reaction

will be. The higher the temperature, the faster the reaction.

USE

Apply the mixture with a spatula in quantities between 1.5 and 3 kg/m² depending on the support and application. Do not apply at temperatures below +7°C.

HANDLING PRECAUTIONS

The information for a correct and safe handling of the products are contained in the safety data sheet. Consult the safety data sheets before use for complete information on the risks for health and environment and for suitable protective devices to be adopted. Share the safety data sheets with all the staff involved in the use of the products.

USABLE LIFE - STORAGE

Store in the original, unopened containers at a temperature between +15°C and +35°C. Epoxy resins have a pronounced tendency to crystallize at temperatures below 25°C. Hardeners are sensitive to moisture: be sure to close containers after use. This material, when stored under the specified conditions, has a shelf life of 12 months from the date of manufacture.

LIMITATIONS

This product is neither tested nor represented as suitable for food contact, skin contact or medical uses.

LIMITED WARRANTY

The information contained in this document is offered in good faith based on Chemix research and is believed to be accurate. However, as the conditions and methods of use of our products are beyond our control, this information should not be used as a substitute for the tests that customers must first perform to ensure that Chemix products are fully satisfactory for their specific applications. The warranty is only applicable to the values indicated in the Product Sales Specifications. The sole and exclusive compensation for products with values that are out of specification is limited to the replacement of the product or the refund of the purchase price.

Chemix disclaims any other explicit or implicit guarantee referring to the suitability of the Products in specific user's applications.

Chemix disclaims any liability for incidental or consequential damages resulting from the use of the Product.

www.chemix.it

Chemix Srl Via Berlinguer 8, 21010 Golasecca (Italy). Phone +39(0)331959373 info@chemix.it

